



# Relationship between cancer mortality and alcohol consumption in the municipality of Luiz Antonio SP Brazil in the 2000/2009

Tonello, Maria Teresinha Martins; Aliberti, Luísa Soares da Silva  
Revised by Dr. Erikson Felipe Furtado

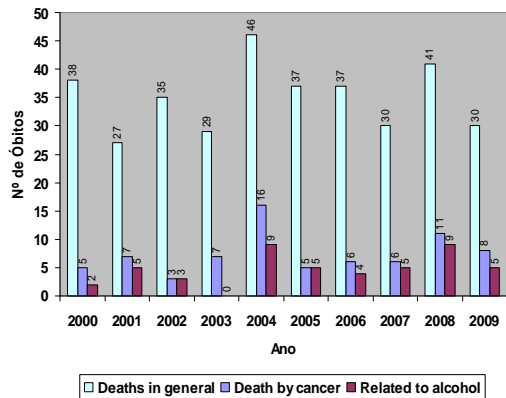


## INTRODUCTION

In a retrospective study of mortality by cause, according ICD 10, at Luiz Antonio- Brazil, we paid attention in the increasing number of deaths by cancer with different stages in individuals over a period of ten years.

After investigation and verification of data from this study, we decided to assign the alcohol to the high number of cancer cases.

Keywords: cancer, alcohol, mortality, Luiz Antônio, Brazil



## OBJECTIVES

Analyzing the increase of cancer mortality in various organs, whose result was attributed to alcohol consumption in the decade 2000/2009 in that municipality.

## METHODS

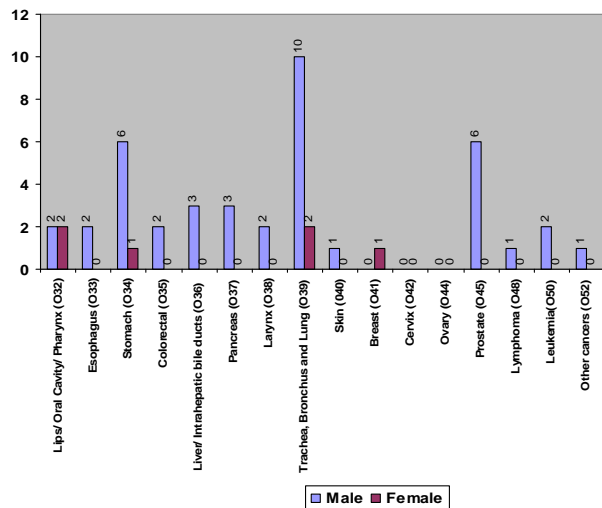
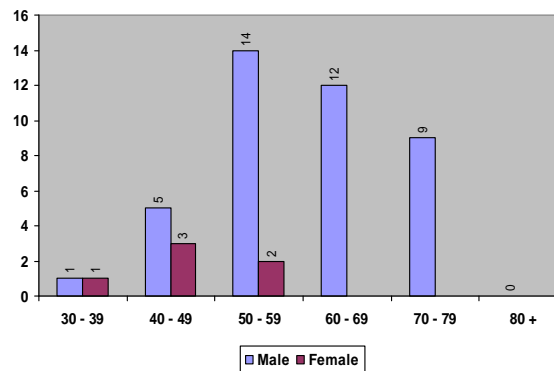
It was related the findings to cases of cancer with alcohol consumption, through information from family, from the patients before their death, and through the PSF teams.

The quantify and evaluate the data was obtained with the following criteria: consider only alcohol as a risk factor, consider all the cases related to alcohol consumption and consider the use of alcohol based on family information about the consumer, regardless of dose or type of beverage.

## RESULTS

It were studied in the decade 2000-2009, 350 deaths overall. Of this total, 74 were by cancer, including 47 people who were using alcohol, representing 63.5%.

The non-occurrence of cancer in the decade studied was found in only one year (2003), and in the remaining years we had a variation of 40% to 100% of cases of deaths related to alcohol use. About the deaths by cancer, um alcohol consumers by age and gender, we observed that among the victims with 50 to 59 years old, 88% was male and only 12% female; among the 60 to 69 years old, 100% of the cases were men. Já em relação à age women, we observed a worse harm from 40 to 49 years old affecting 62,5% of cases.



## CONCLUSION

The occurrence of cancer in consumers of alcohol according to the target organ affected, observed in this work, agreed with the findings of three International Institutes for Scientific Research: National Alimentation Cancer Research Fund World Cancer Research and American Institute for Research on Cancer. "Consumption of alcohol is associated with increased risk of several cancers: mouth, pharynx, larynx, esophagus, colorectal, liver and blood."

As the target organs:

- Lip, oral cavity and pharyngeal (ICD 032): There were 100% in alcohol users - 50% male and 50% women;
- Liver, intrahepatic bile ducts (ICD 036): There were 100% in alcohol users - 100% male;
- Prostate (ICD 045): There were 100% in alcohol users - 100% male;
- Stomach (ICD 034): There were 88% - 100% male;
- Trachea, bronchus and lung (ICD 039): There was the largest number of deaths, 70% in alcohol users - 80% men and 20% women.